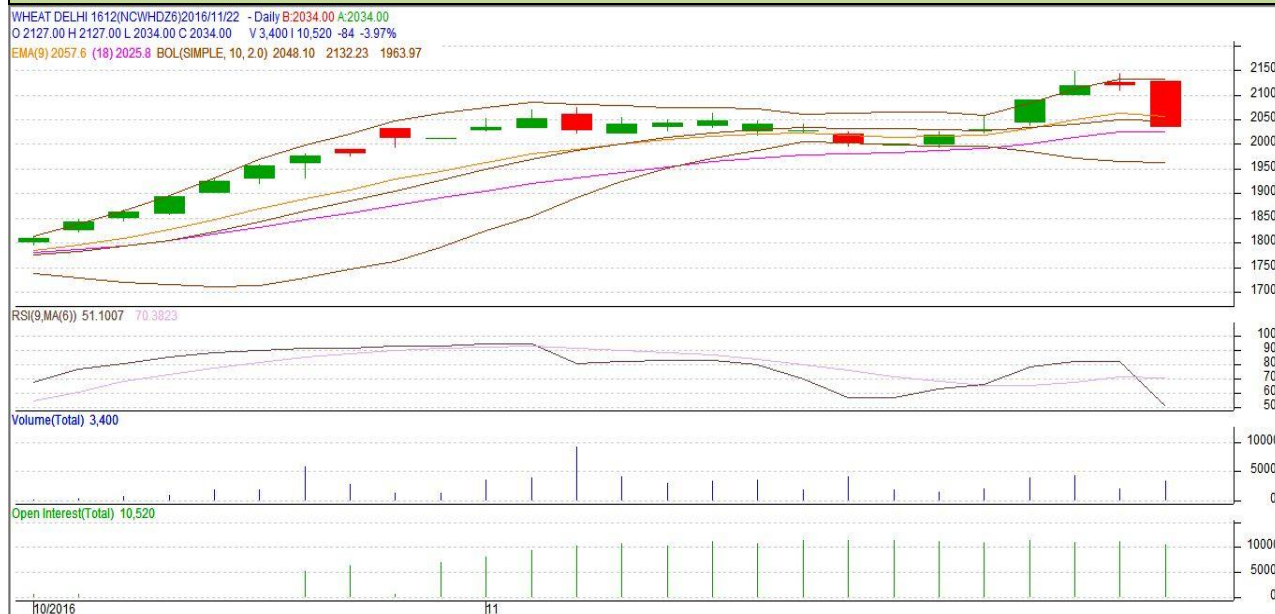


**Commodity: Wheat**  
**Contract: December**
**Exchange: NCDEX**  
**Expiry: 20<sup>th</sup> December, 2016**
**Wheat- Technical outlook**

**Technical Commentary:**

- Fall in price and open interest indicates long liquidation.
- RSI is moving down in neutral region.
- Prices closed below 9 and 18 day EMAs.

**Strategy: Sell**

Intraday Supports & Resistances			S1	S2	PCP	R1	R2
Wheat	NCDEX	December	2000	1995	2034	2055	2060
Pre-Market Intraday Trade Call*			Call	Entry	T1	T2	SL
Wheat	NCDEX	December	<b>Sell</b>	2035	2020	2010	2044

\*Do not carry forward the position until the next day.

**Disclaimer**

The information and opinions contained in the document have been compiled from sources believed to be reliable. The company does not warrant its accuracy, completeness and correctness. Use of data and information contained in this report is at your own risk. This document is not, and should not be construed as, an offer to sell or solicitation to buy any commodities. This document may not be reproduced, distributed or published, in whole or in part, by any recipient here of for any purpose without prior permission from the Company. IASL and its affiliates and/or their officers, directors and employees may have positions in any commodities mentioned in this document (or in any related investment) and may from time to time add to or dispose of any such commodities (or investment). Please see the detailed disclaimer at <http://www.agriwatch.com/Disclaimer.php> © 2016 Indian Agribusiness Systems Pvt Ltd.