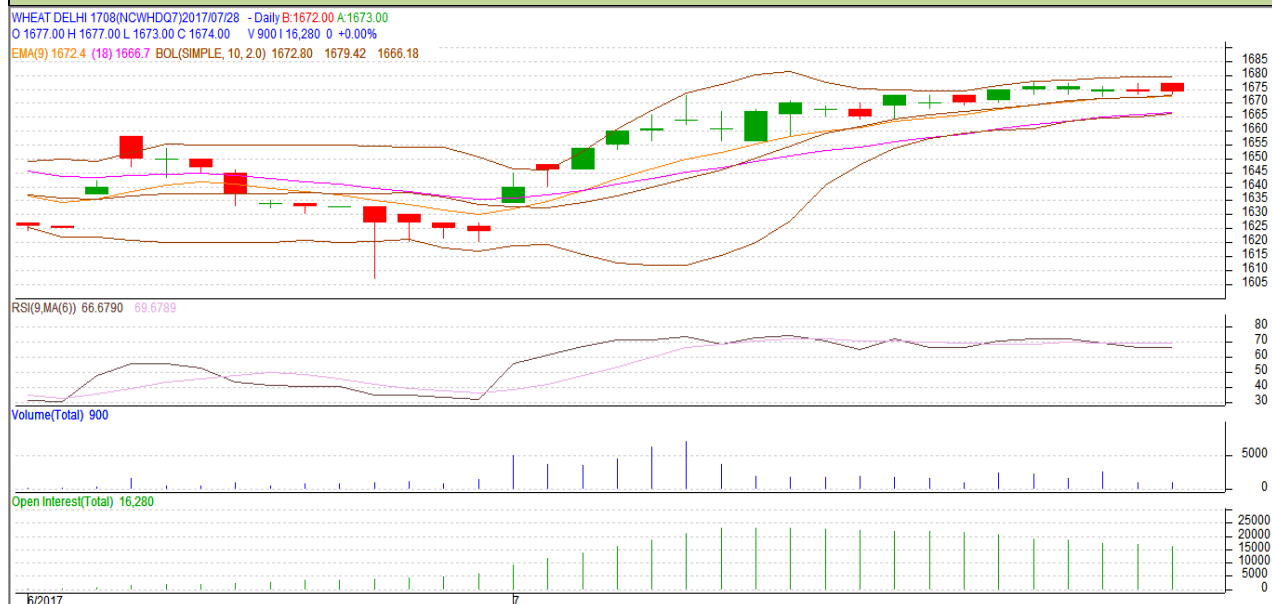


Commodity: Wheat
Contract: August

Exchange: NCDEX
Expiry: 18th August, 2017

Wheat- Technical outlook



Technical Commentary:

- Fall in price and open interest indicates long liquidation.
- RSI is moving in neutral region.
- Prices closed above 9 and 18 day EMAs.

Strategy: Sell

Intraday Supports & Resistances			S1	S2	PCP	R1	R2
Wheat	NCDEX	August	1663	1661	1674	1683	1685
Pre-Market Intraday Trade Call*			Call	Entry	T1	T2	SL
Wheat	NCDEX	August	Sell	1676	1670	1666	1679

*Do not carry forward the position until the next day.

Disclaimer

The information and opinions contained in the document have been compiled from sources believed to be reliable. The company does not warrant its accuracy, completeness and correctness. Use of data and information contained in this report is at your own risk. This document is not, and should not be construed as, an offer to sell or solicitation to buy any commodities. This document may not be reproduced, distributed or published, in whole or in part, by any recipient here of for any purpose without prior permission from the Company. IASL and its affiliates and/or their officers, directors and employees may have positions in any commodities mentioned in this document (or in any related investment) and may from time to time add to or dispose of any such commodities (or investment). Please see the detailed disclaimer at <http://www.agriwatch.com/Disclaimer.php> © 2017 Indian Agribusiness Systems Pvt Ltd.