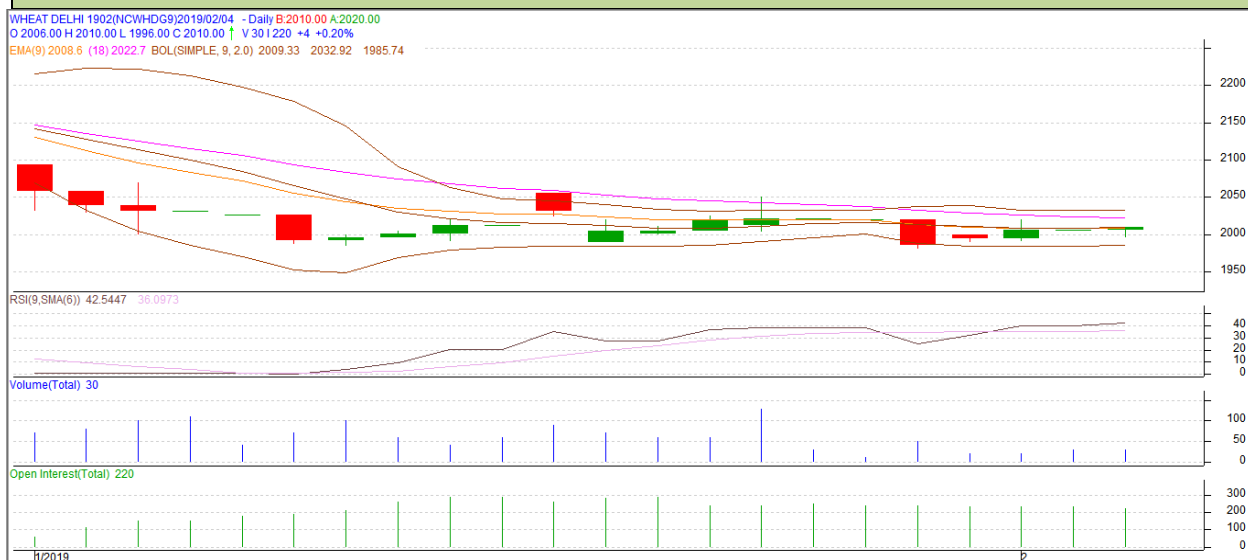


Commodity: Wheat  
Contract: February

Exchange: NCDEX  
Expiry: 20<sup>th</sup> February, 2019

### Wheat- Technical outlook



#### Technical Commentary:

- Rise in price and fall in open interest indicates short covering.
- RSI is moving in neutral region.
- Prices closed below 9 and 18 EMAs.

#### Strategy: Buy

Intraday Supports & Resistances			S1	S2	PCP	R1	R2
Wheat	NCDEX	February	1995	1990	2010	2025	2028
Pre-Market Intraday Trade Call*			Call	Entry	T1	T2	SL
Wheat	NCDEX	February	Buy	2009	2016	2021	2005

\*Do not carry forward the position until the next day.

#### Disclaimer

The information and opinions contained in the document have been compiled from sources believed to be reliable. The company does not warrant its accuracy, completeness and correctness. Use of data and information contained in this report is at your own risk. This document is not, and should not be construed as, an offer to sell or solicitation to buy any commodities. This document may not be reproduced, distributed or published, in whole or in part, by any recipient hereof for any purpose without prior permission from the Company. IASL and its affiliates and/or their officers, directors and employees may have positions in any commodities mentioned in this document (or in any related investment) and may from time to time add to or dispose of any such commodities (or investment). Please see the detailed disclaimer at <http://www.agriwatch.com/disclaimer.php> © 2019 Indian Agribusiness Systems Ltd.