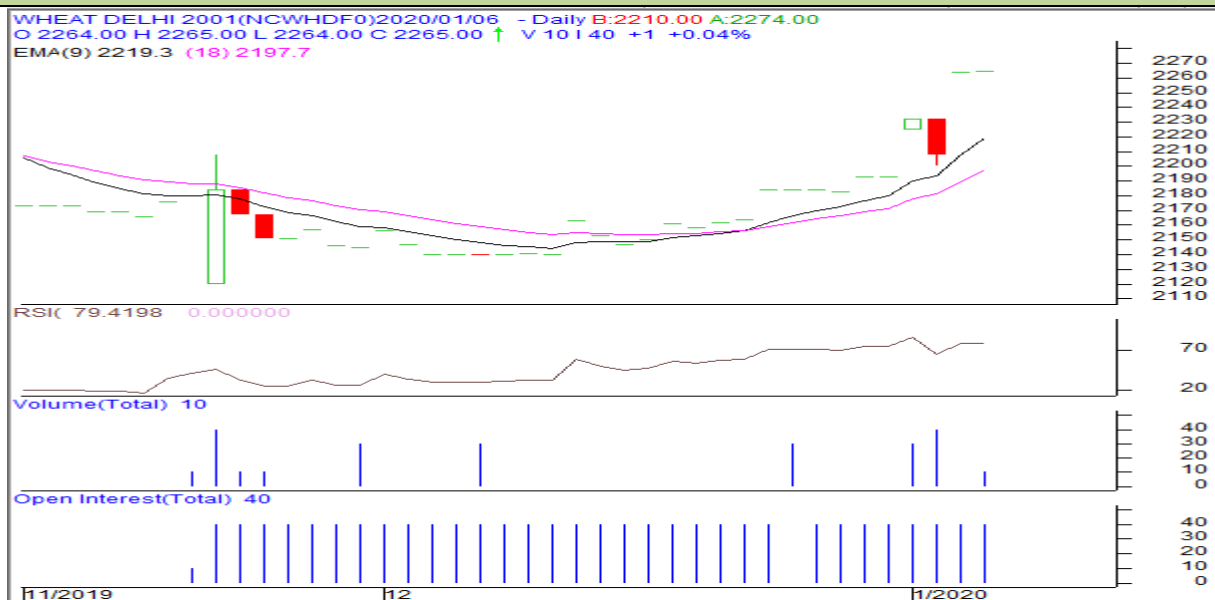


Commodity: Wheat
Contract: January
Exchange: NCDEX
Expiry: 20th January, 2019
Wheat- Technical outlook

Technical Commentary:

- Increase in price denotes buying interest in the market.
- RSI is steady in overbought region.
- Prices closed above 9 and 18 Day EMAs.

Strategy: Buy

Intraday Supports & Resistances			S1	S2	PCP	R1	R2
Wheat	NCDEX	January	2210	2195	2265	2310	2325
Pre-Market Intraday Trade Call*			Call	Entry	T1	T2	SL
Wheat	NCDEX	January	Buy	2262	2272	2277	2256

*Do not carry forward the position until the next day.

Disclaimer

The information and opinions contained in the document have been compiled from sources believed to be reliable. The company does not warrant its accuracy, completeness and correctness. Use of data and information contained in this report is at your own risk. This document is not, and should not be construed as, an offer to sell or solicitation to buy any commodities. This document may not be reproduced, distributed or published, in whole or in part, by any recipient hereof for any purpose without prior permission from the Company. IASL and its affiliates and/or their officers, directors and employees may have positions in any commodities mentioned in this document (or in any related investment) and may from time to time add to or dispose of any such commodities (or investment). Please see the detailed disclaimer at <http://www.agriwatch.com/disclaimer.php> © 2020 Indian Agribusiness Systems Ltd.